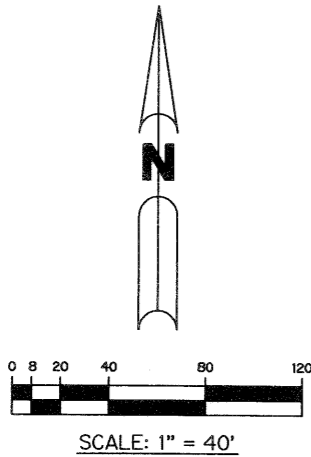


CANYON SPRINGS

BEING A PORTION OF TRACTS 69 THROUGH 92 AND TRACTS 101 THROUGH 123, BLOCK 59, AND THAT STRIP OF LAND, 30 FEET IN WIDTH, LYING BETWEEN SAID TRACTS 81 THROUGH 92 AND TRACTS 101 THROUGH 112, AND THAT STRIP OF LAND, 30 FEET IN WIDTH, LYING BETWEEN THE WEST LINE OF SAID TRACTS 72, 89, 104, 121 AND THE EAST LINE OF SAID TRACTS 73, 88, 105, AND 120, PALM BEACH FARMS COMPANY PLAT NO. 3 ACCORDING TO THE PLAT THEREOF RECORDED IN PLAT BOOK 2, PAGE 45 THROUGH 54 OF THE PUBLIC RECORDS OF PALM BEACH COUNTY, FLORIDA, LYING IN SECTION 32, TOWNSHIP 45 SOUTH, RANGE 42 EAST, PALM BEACH COUNTY, FLORIDA

SHEET 21 OF 25 MARCH, 2006



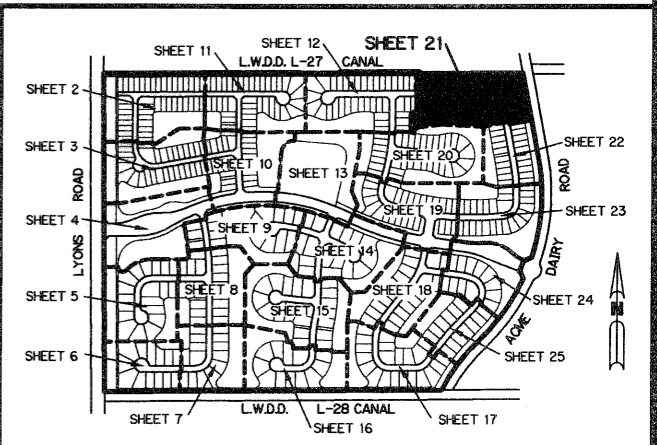
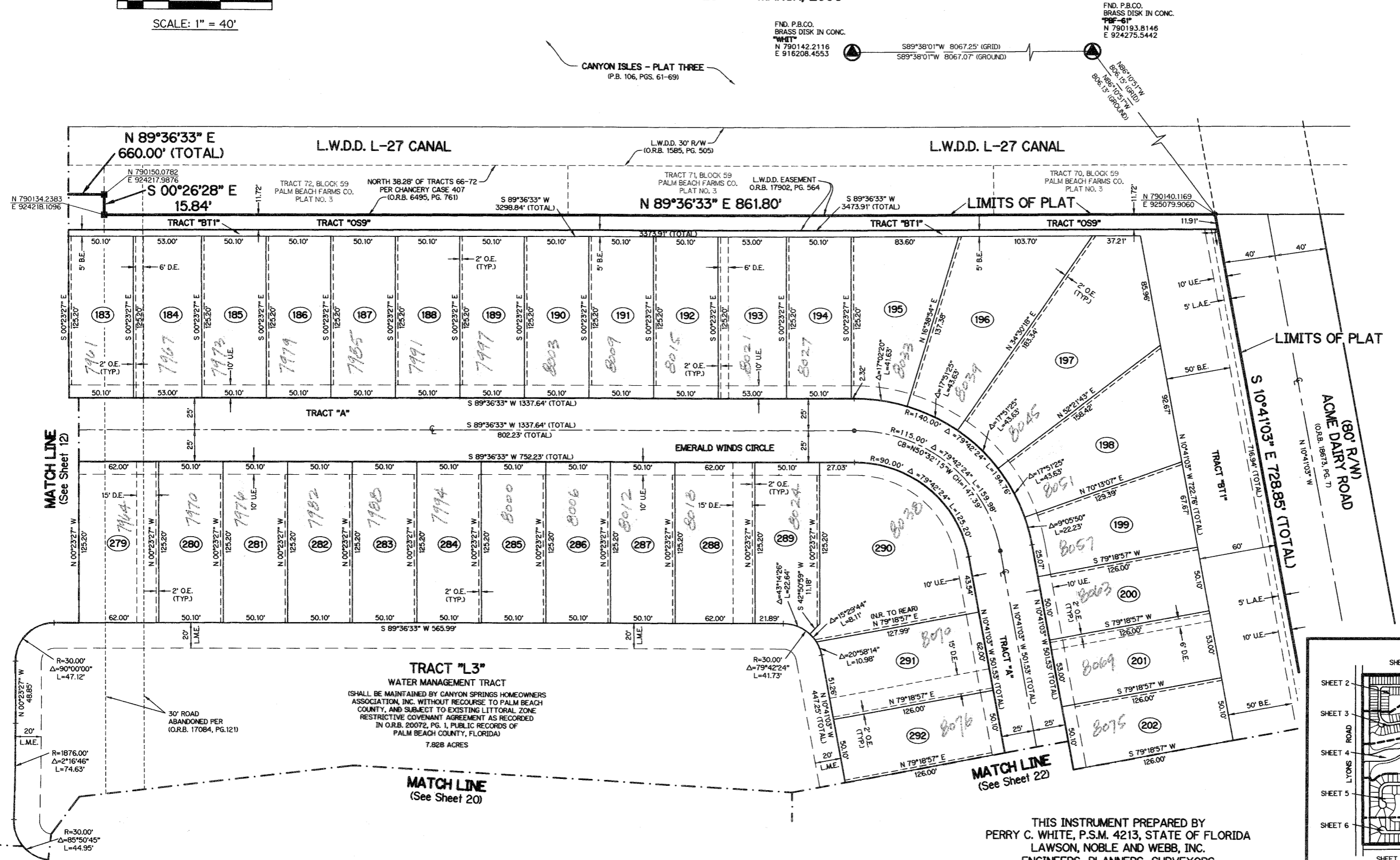
NOTE:
COORDINATES SHOWN ON THE GEODETIC CONTROL MEET OR EXCEED THE LOCAL ACCURACY REQUIREMENTS OF A 2 CENTIMETER GEODETIC CONTROL SURVEY.
COORDINATES SHOWN ARE GRID COORDINATES DATUM = NAD 83 (1990 ADJUSTMENT) AS READJUSTED BY PALM BEACH COUNTY IN 1998.
ZONE = FLORIDA EAST ZONE
LINEAR UNIT = U.S. SURVEY FEET
COORDINATE SYSTEM = 1983 STATE PLANE TRANSVERSE MERCATOR PROJECTION
ALL DISTANCES ARE GROUND
SCALE FACTOR = 1.000027
PLAT BEARING = GRID BEARING

165

FND. P.B.CO. BRASS DISK IN CONC. N 790142.2116 E 916208.4553 S 89°38'01"W 8067.25' (GRID) S 89°38'01"W 8067.07' (GROUND) N 790140.1169 E 925079.9060

CANYON ISLES - PLAT THREE (P.B. 106, PGS. 61-69)

- LEGEND:**
- - SET PERMANENT REFERENCE MONUMENT, L.B. #6674
 - - FOUND PERMANENT REFERENCE MONUMENT, L.B. #6674
 - - SET PERMANENT CONTROL POINT, L.B. #6674
 - - FOUND PERMANENT CONTROL POINT, L.B. #6674
 - △ - DELTA ANGLE
 - B.E. - BUFFER EASEMENT
 - CB - CHORD BEARING
 - CD - CHORD DISTANCE
 - CL - CENTERLINE
 - D.B. - DEED BOOK
 - D.E. - DRAINAGE EASEMENT
 - GND. - GROUND
 - L - ARC LENGTH
 - L.A.E. - LIMITED ACCESS EASEMENT
 - L.M.A.E. - LAKE MAINTENANCE ACCESS EASEMENT
 - L.M.E. - LAKE MAINTENANCE EASEMENT
 - L.W.D.D. - LAKE WORTH DRAINAGE DISTRICT
 - NR. - NOT RADIAL
 - N.T.S. - NOT TO SCALE
 - O.R.B. - OFFICIAL RECORD BOOK
 - P.B. - PLAT BOOK
 - P.C. - POINT OF CURVATURE
 - P.C.P. - PERMANENT CONTROL POINT
 - PGS. - PAGES
 - P.O.B. - POINT OF BEGINNING
 - P.O.C. - POINT OF COMMENCEMENT
 - P.S.M. - PROFESSIONAL SURVEYOR AND MAPPER
 - P.T. - POINT OF TANGENCY
 - R - RADIUS
 - RAD. - RADIAL
 - R/W - RIGHT-OF-WAY
 - TYP. - TYPICAL
 - U.E. - UTILITY EASEMENT
 - N 100000.0000 E 100000.0000 - DENOTES STATE PLANE COORDINATES



THIS INSTRUMENT PREPARED BY
PERRY C. WHITE, P.S.M. 4213, STATE OF FLORIDA
LAWSON, NOBLE AND WEBB, INC.
ENGINEERS PLANNERS SURVEYORS
420 COLUMBIA DRIVE
WEST PALM BEACH, FLORIDA 33409
LB-6674

SUBDIVISION Canyon Springs
BLOCK 107 BAGS 165
PLANNED UNIT DEVELOPMENT
ZONING AGR
SE
TAX 750
PLAT 165

TRACT "L3"
WATER MANAGEMENT TRACT
(SHALL BE MAINTAINED BY CANYON SPRINGS HOMEOWNERS ASSOCIATION, INC. WITHOUT RECOURSE TO PALM BEACH COUNTY, AND SUBJECT TO EXISTING LITTORAL ZONE RESTRICTIVE COVENANT AGREEMENT AS RECORDED IN O.R.B. 20072, PG. 1, PUBLIC RECORDS OF PALM BEACH COUNTY, FLORIDA)
7.828 ACRES